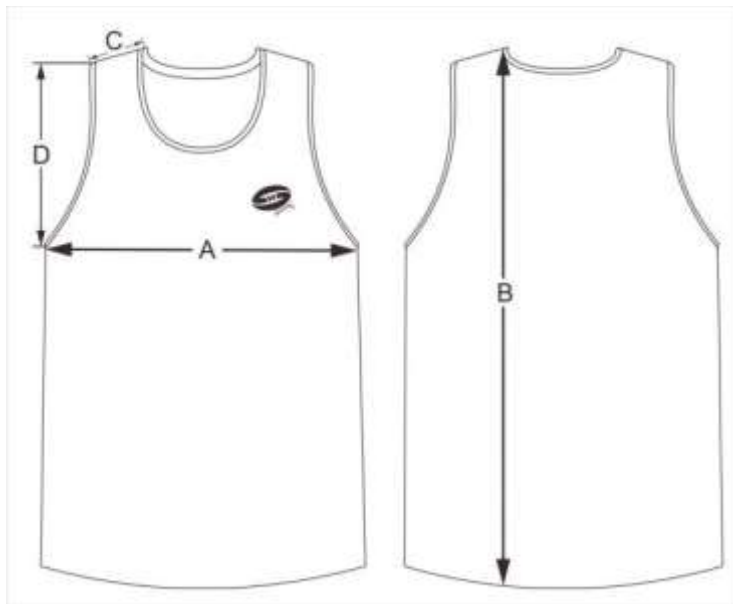


MSG UNIFORM: Ladies Touch Singlet



Note: Take a garment that you own that you are comfortable with the fit of and measure the dimensions of it when it is laid out flat.

½ Chest Measurement: Taken from armpit to armpit.

Length Measurement: Taken from the highest shoulder point to the bottom.

| | SIZE | 4 | 6 | 8 | 10 | 12 | 14 |
|---|--------------------------|------|------|------|------|------|------|
| A | HALF CHEST CIRCUMFERENCE | 39 | 40.5 | 43 | 45.5 | 47.5 | 49.5 |
| B | CLOTHES LENGTH | 58.5 | 61 | 63.5 | 66 | 68.5 | 71 |
| C | SHOULDER WIDTH | 4.5 | 4.5 | 5 | 5.5 | 6 | 7 |
| D | SLEEVE DIAMETER | 18.5 | 19.5 | 20.5 | 22 | 22.5 | 23.5 |

| | SIZE | 16 | 18 | 20 | 22 | 24 |
|---|--------------------------|------|------|------|----|------|
| A | HALF CHEST CIRCUMFERENCE | 52.5 | 56 | 59 | 63 | 68.5 |
| B | CLOTHES LENGTH | 72.5 | 74.5 | 75.5 | 77 | 78 |
| C | SHOULDER WIDTH | 7 | 7.5 | 7.5 | 8 | 8.5 |
| D | SLEEVE DIAMETER | 24.5 | 26 | 26.5 | 27 | 27 |